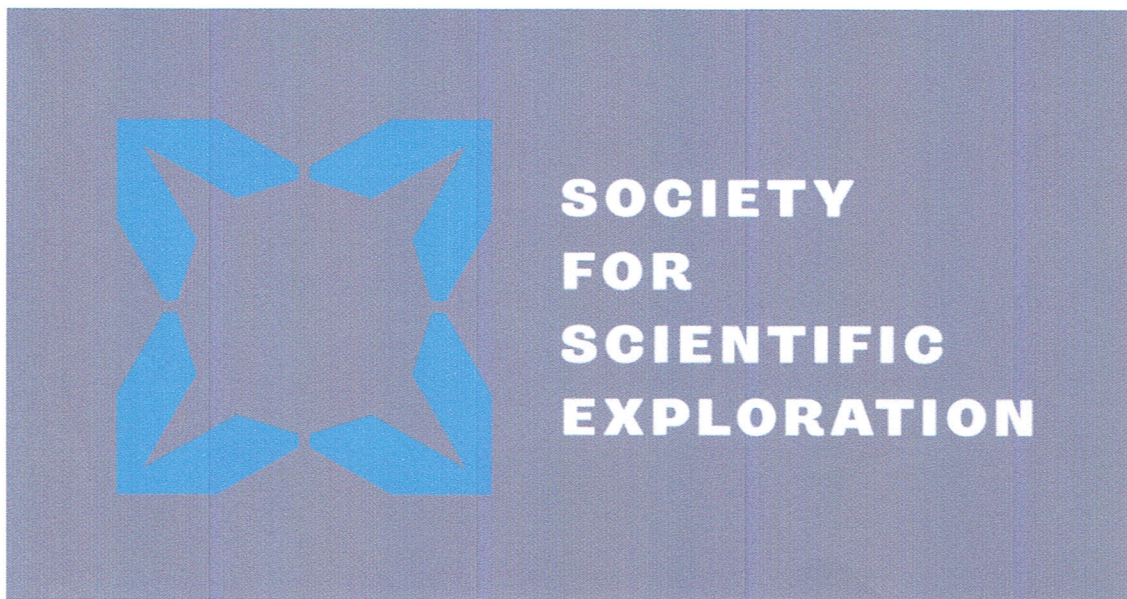


wada@ladies.jp

差出人: "Society for Scientific Exploration" <community@scientificexploration.org>
日時: 2019年9月24日 7:59
宛先: <wada@ladies.jp>
件名: SSE-Japan Meeting Announcement

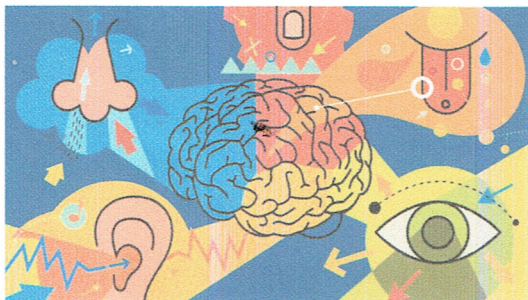
[View this email in your browser](#)



SSE-Japan Event #09

Tuesday, Oc, 2019
18:30-20:30

National Institute of Informatics
Room #1213
2-chome-1-2 Hitotsubashi
Chiyoda-shi, Tokyo



Jimbocho Station exit #A8 (Toei Mita Line) – closest station

RSVP

Multiple Sensorial Media (Mulsemedia)

Opportunities and Challenges

This event is sponsored by the National Institute of Informatics, and presented by visiting professor - Dr. Gheorghita (George) Ghinea - Professor of Mulsemedia Computing from the Department of Computer Science, at Brunel University (London).

Traditionally, multimedia applications have primarily engaged two of the five human senses - the audio and the visual. However, with recent advances in computational technology, it is now possible to talk of applications that engage the other three senses, as well: tactile, olfaction, and gustatory. This integration leads to a paradigm shift away from the old multimedia towards the new "mulsemedia" - multiple sensorial media. In his presentation, Prof. Ghinea will focus on the perceptual experience of multimedia and how research in the area has opened new possibilities of mulsemedia applications for future communications, advertising and education.

Come join us for a lively exploration into this interesting topic and perhaps a social drink or two afterwards!



*Copyright © 2019 Society for Scientific Exploration, All rights reserved.
You are receiving this email because you opted in via our website.*

Our mailing address is:
Society for Scientific Exploration
PO Box 8012
Princeton, NJ 08543-8012

[Add us to your address book](#)

Want to change how you receive these emails?
You can [update your preferences](#) or [unsubscribe from this list](#).