

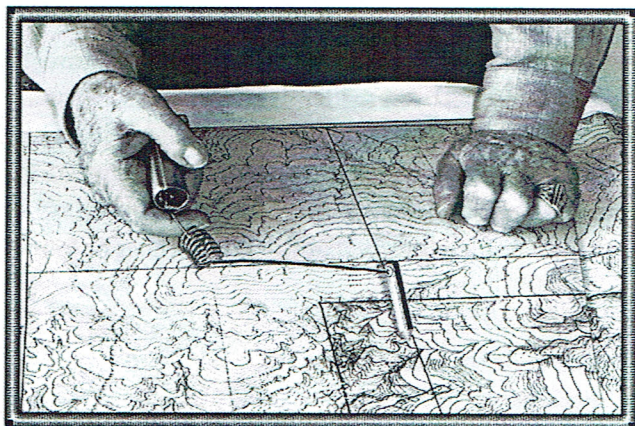
**Instructions
for the use of**

Purchased From

The ORIGINAL
Cameron
AURAMETER

**An experimental Dowsing Device
(accept no substitute)**

The Aurameter can be gripped in either hand. For increased sensitivity, the instrument is held with your palm turned semi-upward. This is known as the "Side-Grip." It is the ideal handling mode for seeking answers to questions. These are first framed in your logical, reasoning mind. Then by means of your prearranged code, intuitive information from the person, creature, object, substance or thing, may be gained at a distance, enabling one to exceed the limitations of the five senses.



Map Dowsing with Aurameter

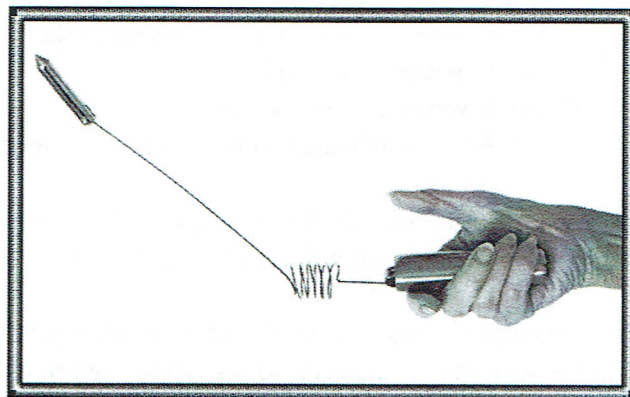
With the "Under-Grip", the palm faces upwards. Coil spring wand, is elevated higher. Sensitivity increases with height, which is applied when responses are generally weak.

Always stand erect, yet relaxed and focused. Hold Aurameter lightly. Do not clench the handle with undue force. The Aurameter serves five dowsing functions: A directional compass, up-and-down weighing device, upright pendulum, wand and gravity pendulum.

Grip handle half-way back so that your index finger doesn't make contact with the coil-spring wand, thereby placing a drag on its free side-wise/up-and-down movements. This drag can nullify the counter-balancing action between the wand and tiny coil spring mounted inside of the handle. It is this free interplay that achieves the Aurameter's ultra sensitive dowsing reactions.

Years of workshops and dowsing with the Aurameter show that subtle pre-physical energies, originating in one's autonomic nervous system, flow from the body into the instrument. There the Aurameter, operating as a receiving antenna, may be energized beyond one's physical control. Your Aurameter may thus become an extension of both intellectual and intuitive faculties where one may feel and sense the object of one's quest at a distance.

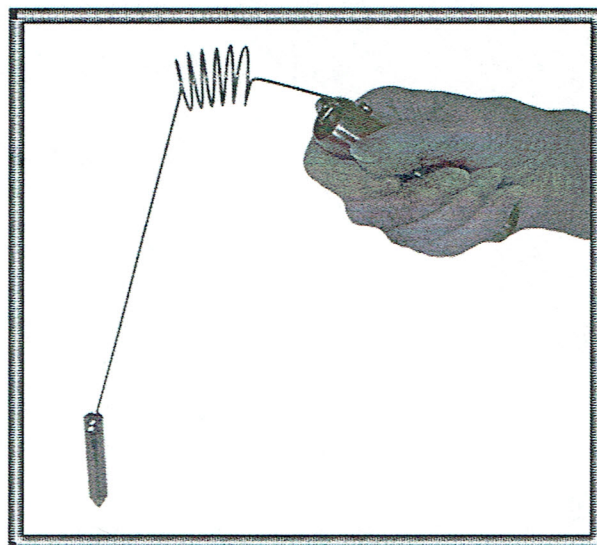
The prone "Over-Grip" (with palm turned downward) enables one to maintain greater physical control over the instrument in specialized situations.



Side-Under Grip

Begin by bringing the Aurameter into position with the coil spring-wand and tip slanting downward and pointing directly forward, so that gravity helps to establish proper beginning balance.

Once the wand-pointer assembly is properly centered forward, slowly raise it upward. This is achieved by bending your wrist (not elevating the forearm at this time). Eventually, the Aurameter will reach "poise" position. Here it becomes increasingly difficult to sustain the pointer upward and directly forward. When it falls over to the right, or left, out of control, you have gone too far. The "poise" position is critical for maximum response. The higher you raise the coil-spring, wand – pointer assembly without losing balance – the greater the sensitivity; especially useful when lower elevated responses seem sluggish. When wand and pointer slant downward, the added weight at the tip creates inertia, but when the assembly is elevated above level with the floor or horizon, this is the ideal searching mode.



Aurameter drooping wrong

When dowsing with the Aurameter, subtle energies hopefully make contact with the object of one's search, through the medium of the law of sympathetic attraction. After sustained contact has been made, the instrument registers replies by means of one's previously arranged code. For example: "Yes" indicates with a right swing and "No" with a left swing. If the wand-pointer fails to swing fully over right, or left, this indicates uncertain, maybe, question unclear, or try later reactions. You can also develop answers with numbers and letters of the alphabet in series by bobbing the wand-pointer up and down. Wand-pointer swinging full-over signals arrival at the last number or letter of inquiry.

Time lapses occasionally occur from a few seconds up to a half minute or so, after the question has been posed in one's mind. Beginners usually require more time to make the necessary connections between mind, body and Aurameter. Remember, the instrument also requires extra time to overcome inertia if the wand-pointer is slanted downward.

If responses are slow in forthcoming, check on these:

- (a) Is question unclear?
- (b) Is your mind wandering?
- (c) Are multiple questions confusing the specific response desired?

The Cameron Aurameter In Action, a detailed, self-instructional book, one of our DVD's, and other Dowsing books may be purchased from your dealer, or Fine Media International.

The Aurameter is fully guaranteed against defective parts or workmanship. Obvious abuse or tampering voids guarantee. If legitimate repairs or adjustments are needed, return the Aurameter with \$10.00 for postage and handling costs to your dealer.